

IF YOU BUY USED EQUIPMENT...

INSPECT and REMOVE all plants, mud, or other debris found on equipment that has been sitting in water: dock posts, wheels, boats, rafts, pontoons, kayaks, jet skis.

DRAIN all water if possible.

SPRAY all equipment (including live wells) with a pressure washer sprayer.

OR

SPRAY down your equipment with a bleach/water solution, including the inside of live wells.

- Use one tablespoon of bleach per gallon of water.

OR

AIR DRY all equipment for at least **5 DAYS**.

TALK to your neighbors about taking these steps.



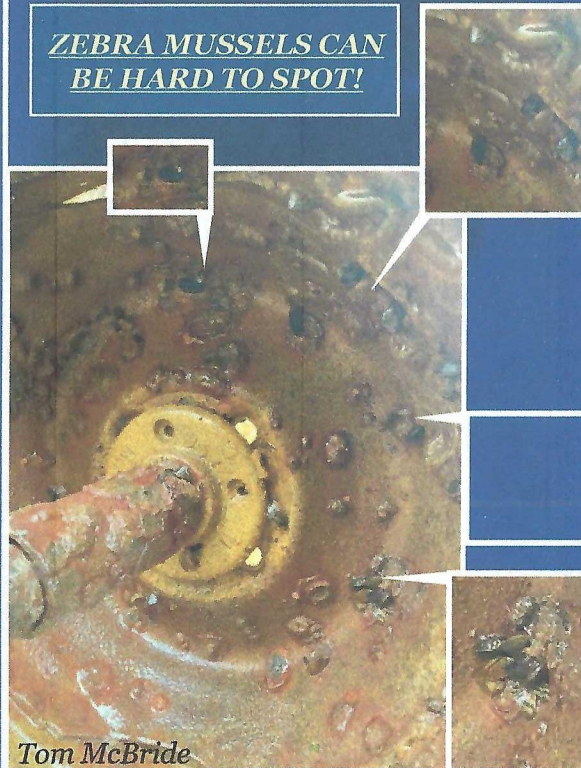
Tom McBride

WHEN REMOVING EQUIPMENT FOR WINTER STORAGE...



INSPECT docks, lifts, boats, and other equipment for zebra mussels.

ZEBRA MUSSELS CAN BE HARD TO SPOT!



Tom McBride

WHAT TO DO IF YOU FIND SOMETHING

TAKE a digital **photo** of it in the setting where it was found.

COLLECT up to **five specimens** of varying sizes.

PLACE them in a **jar or plastic bag with water**; put on ice and put in your refrigerator.

LABEL the container with the address where it was found using a black sharpie or other waterproof marker.



CONTACT:

the Polk County Land and Water Resources Department
at 715-485-8699.

IDENTIFICATION



- ❖ Zebra mussels are small mollusks with **D-shaped shells** that grow up to **about 2 inches long**.
- ❖ Shells are typically **light brown to white, with brown-black stripes**.
- ❖ Zebra mussels have **tiny threads that anchor them** to various firm surfaces including rocks, logs, plants, trash, docks, and other animals.



WHERE THEY'RE FOUND

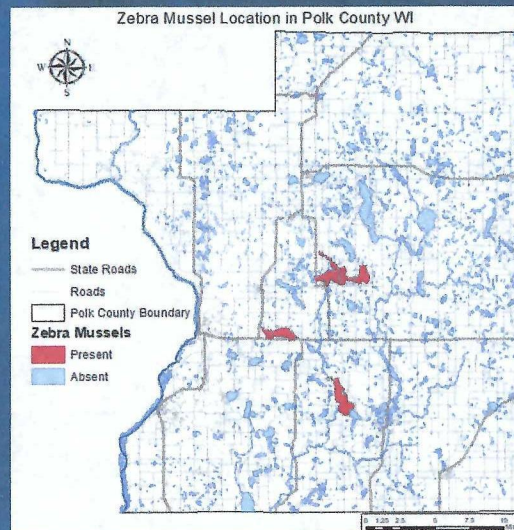


IN THE US:

Zebra mussels are abundant in the **Great Lakes** and are scattered in inland waters in the eastern and central United States.

IN POLK COUNTY:

They have been verified in **Deer, Balsam, and Wapogasset**.



WHAT YOU CAN DO ABOUT ZEBRA MUSSELS



How to identify and check for zebra mussels on your equipment and prevent their spread to other lakes.